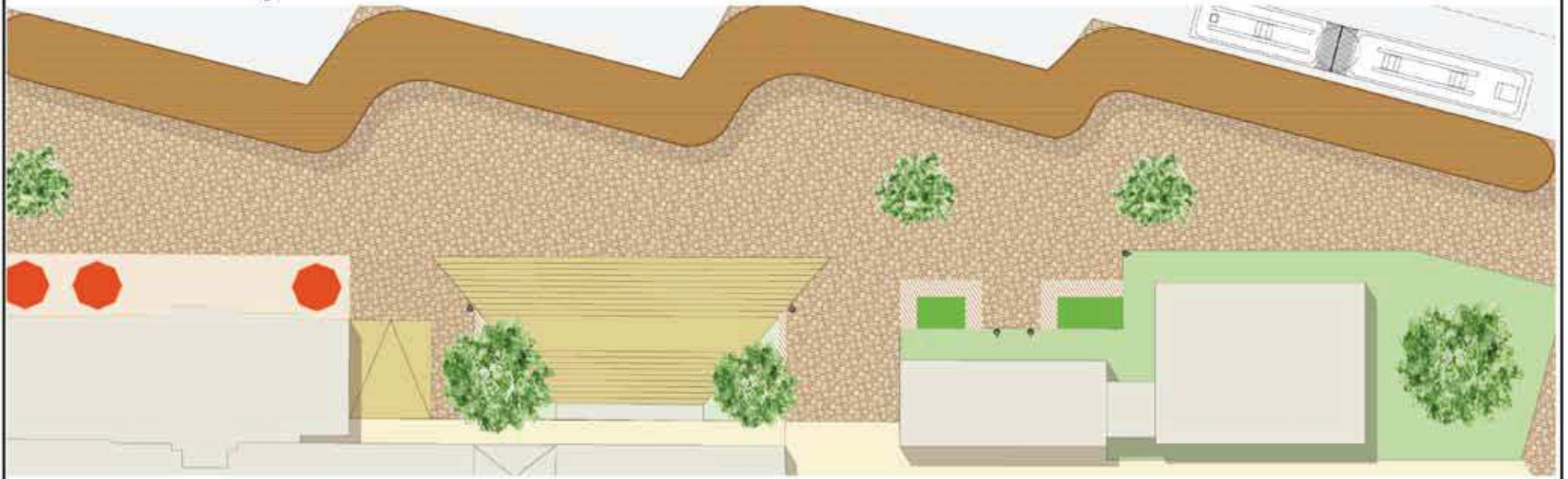


# umsteigen: BAHNHOF LAMPERTHEIM

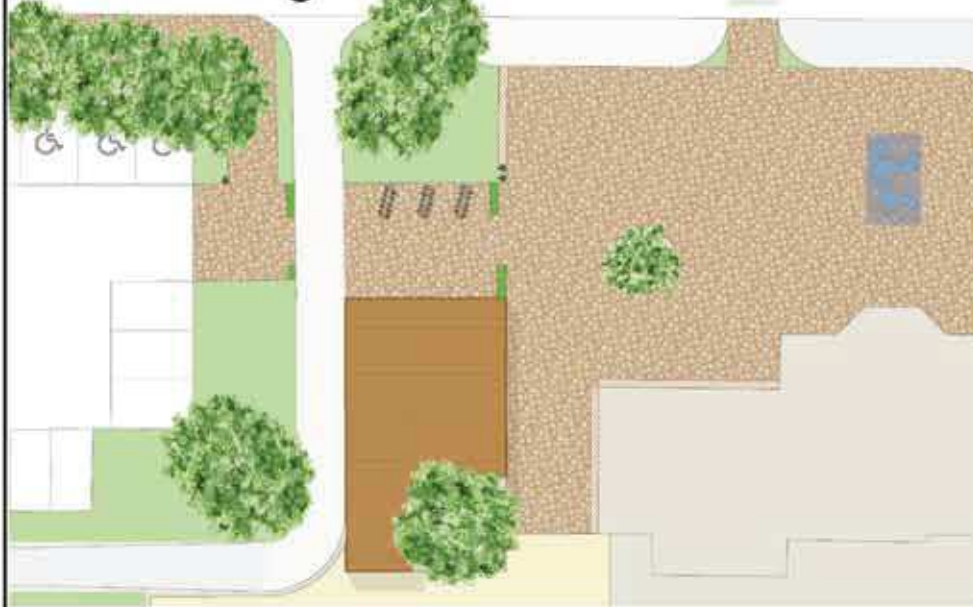
# 4

Domenikus Fischer, Lars Riach, Tobias Schumacher

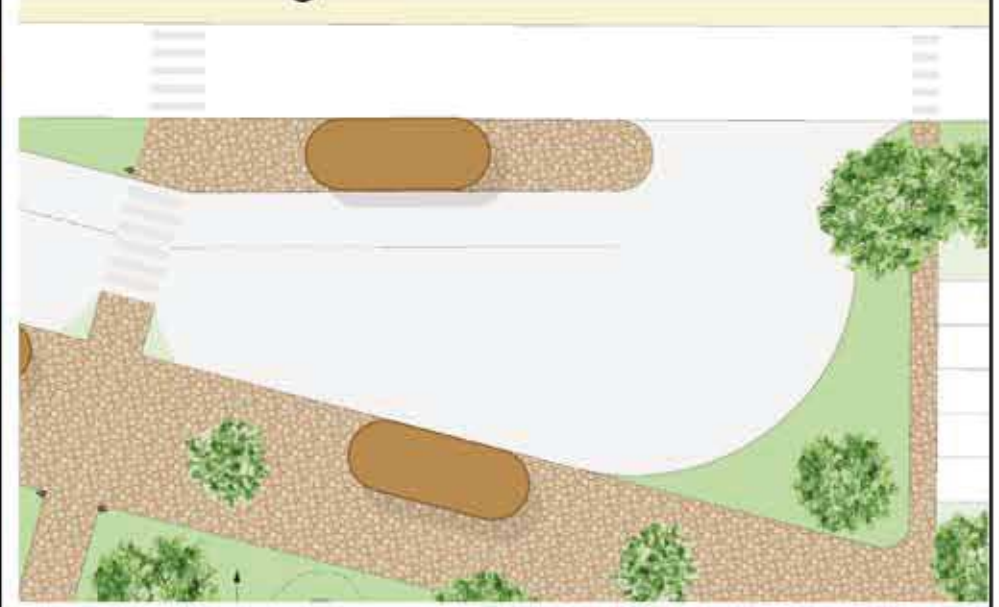
## Bahnhofsvorplatz



## Radführung



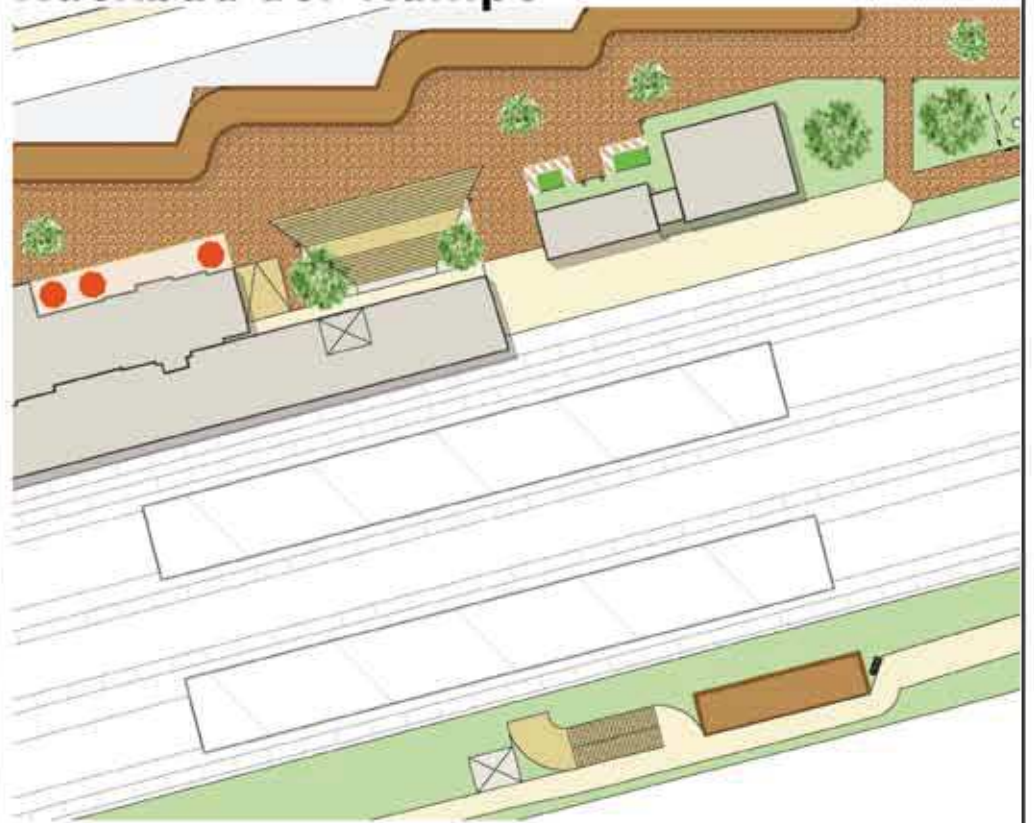
## Busführung



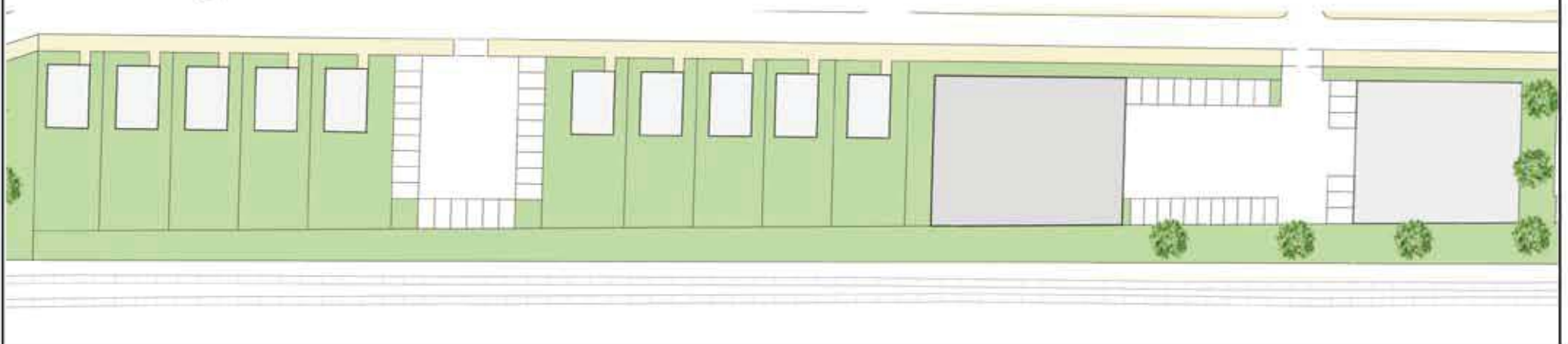
## Neue Fahrradunterführung



## Rückbau der Rampe



## Gestaltung der Brachfläche



# 3D-Ansicht Bahnhofsvorplatz

